

Erratum to: Anti-proliferative Effects of Tricyclodecan-9-yl-xanthogenate (D609) Involve Ceramide and Cell Cycle Inhibition

Anchal Gusain • James F. Hatcher •
Rao Muralikrishna Adibhatla • Umadevi V. Wesley •
Robert J. Dempsey

Published online: 4 May 2012

© Springer Science+Business Media, LLC 2012

Erratum to: Mol Neurobiol
DOI 10.1007/s12035-012-8254-0

We would like to clarify that Fig. 3 and Fig. 7 data are from the same experiment and the control group is the same; however for organizational purposes data for D609 (Fig. 3) and C8-ceramide (Fig. 7) were presented separately. In this erratum,

we are providing revised Figure 3 (consolidating Figs 3 and 7) and where ever Fig. 7 is cited, please refer to revised Fig. 3 below.

Also, the text in the results section (fourth page of the article) and the legend for Fig. 7 for quantification of BrdU incorporation should read “..... captured from three wells each...” instead of “..... captured from four wells each.....”

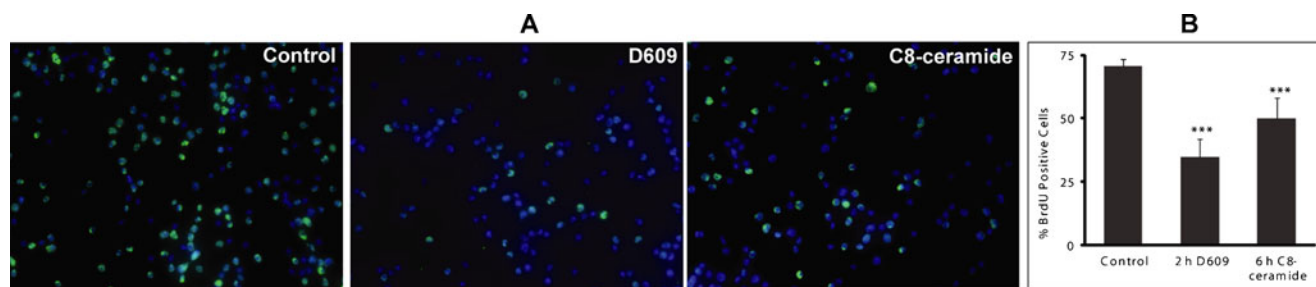


Fig. 3 D609 and exogenous C8-ceramide inhibited BrdU incorporation in BV-2 cells. **(a)**: Representative images of BrdU uptake in BV-2 controls and cells treated with D609 or exogenous C8-ceramide. Cells were plated in 96-well plates and allowed to attach overnight, then treated with 100 μ M D609 for 2 h or 30 μ M C8-ceramide for 6 h. The media was then replaced with fresh media containing BrdU and cells were incubated for

2 h. Cells were labeled with anti-BrdU antibody followed by DAPI counterstaining, and imaged. Blue: DAPI, green: BrdU. Original magnification 200x. **(b)**: Quantification of BrdU-positive cells as a percentage of total cells. Two sets of images were captured from three wells each from controls, D609 and C8-ceramide treated. *** $p < 0.001$ compared with controls by ANOVA followed by Bonferroni post test

The online version of the original article can be found at <http://dx.doi.org/10.1007/s12035-012-8254-0>.

A. Gusain • J. F. Hatcher • R. M. Adibhatla (✉) • U. V. Wesley •
R. J. Dempsey (✉)
Department of Neurological Surgery,
School of Medicine and Public Health, University of Wisconsin,
Box 8660, Clinical Science Center, 600 Highland Ave,
Madison, WI 53792, USA
e-mail: adibhatl@neurosurg.wisc.edu
e-mail: dempsey@neurosurg.wisc.edu

R. M. Adibhatla
Cardiovascular Research Center,
School of Medicine and Public Health, University of Wisconsin,
Madison, WI, USA

R. M. Adibhatla
Neuroscience Training Program,
School of Medicine and Public Health, University of Wisconsin,
Madison, WI, USA

A. Gusain • J. F. Hatcher • R. M. Adibhatla • R. J. Dempsey
William S. Middleton Veterans Affairs Hospital,
Madison, WI, USA